

Wild River

Words and Music by
PHIL WICKHAM and CHRIS TOMLIN

INTRO

C5



VERSE 1

C

There is a foun - tain that nev - er runs dry, —



for - ev - er flows with wa - ter of life. You nev - er stop mov - ing. You nev - er stop mov - ing.

VERSE 2

9 C



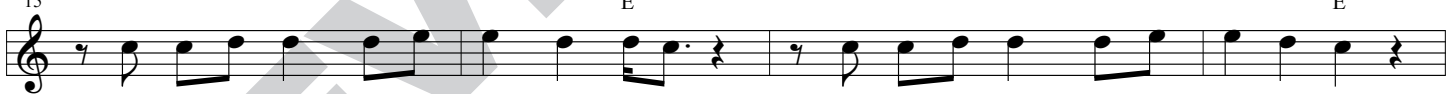
Where Your riv - er runs, ev - 'ry - thing lives. And where Your riv - er goes, we'll



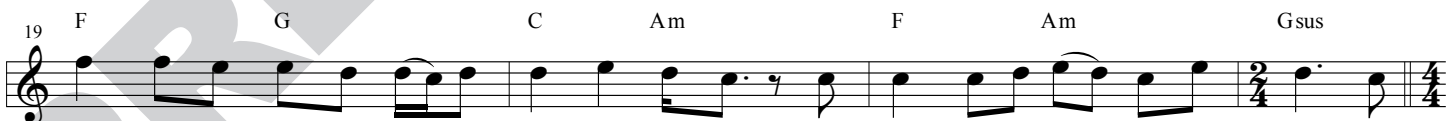
nev - er thirst a - gain. You nev - er stop mov - ing. You nev - er stop mov - ing.

CHORUS

15 F G C C/E F G C C/E



Your mer - cy flows like a wild, wild riv - er. Your love is strong like the rag - ing sea.



God, all Your good - ness goes be - yond all mea - sure, Your praise like a flood pour - ing out of

VERSE 3

23 C5 C



me. You call me out to walk with You on the sea. —



E - ven in my doubt, deep calls to deep. You nev - er stop mov - ing. You nev - er stop mov - ing.

CHORUS

31 F G C $\frac{C}{E}$ F G C $\frac{C}{E}$

Your mer-cy flows like a wild, wild riv-er. Your love is strong like the rag-ing sea.

35 F G C Am F Am Gsus

God, all Your good-ness goes be-yond all mea-sure, Your praise like a flood pour-ing out of

BRIDGE 1

39 C5 C

me. Your grace a lim-it-less o-cean. I'm swept a-way in the tide.

43 C

We draw from the well of Your good-ness, and drink from the wa-ter of life.

BRIDGE 2

45 $\frac{C}{F}$ $\frac{C}{G}$ Am7

Your grace a lim-it-less o-cean. I'm swept a-way in the tide. We draw from the well of Your good-ness,

CHORUS

48 $\frac{C}{G}$ F G C $\frac{C}{E}$ F G

and drink from the wa-ter. Your mer-cy flows like a wild, wild riv-er. Your love is strong like the

52 C $\frac{C}{E}$ F G C Am F Am

rag-ing sea. God, all Your good-ness goes be-yond all mea-sure, Your praise like a flood pour-ing

56 1. Gsus C 2. Gsus Am F Am

out of me. out of me. Your praise like a flood pour-ing

59 Gsus C5 Am7 $\frac{C}{F}$ C

out of me.

WORSHIP TOGETHER

Wild River

Words and Music by
PHIL WICKHAM and CHRIS TOMLIN

INTRO

B5



VERSE 1

B



There is a foun - tain that nev - er runs dry, —

B
F#

B
E

G#m

F#sus



for - ev - er flows with wa - ter of life. You nev - er stop mov - ing. You nev - er stop mov - ing.

VERSE 2

B



Where Your riv - er runs, ev - 'ry - thing lives. And where Your riv - er goes, we'll

B
F#



nev - er thirst a - gain. You nev - er stop mov - ing. You nev - er stop mov - ing.

CHORUS

E

F#

B

B
D#

E

F#

B

B
D#



Your mer - cy flows like a wild, wild riv - er. Your love is strong like the rag - ing sea.

E

F#

B

G#m

E

G#m

F#sus



God, all Your good - ness goes be - yond all mea - sure, Your praise like a flood pour - ing out of

VERSE 3

B5

B



me. You call me out to walk with You on the sea. —

B
F#

B
E

G#m

F#sus



E - ven in my doubt, deep calls to deep. You nev - er stop mov - ing. You nev - er stop mov - ing.

CHORUS

31 E F# B B/D# E F# B B/D#

Your mer-cy flows like a wild, wild riv-er. Your love is strong like the rag-ing sea.

35 E F# B G#m E G#m F#sus

God, all Your good-ness goes be-yond all mea-sure, Your praise like a flood pour-ing out of

BRIDGE 1

39 B5 B

me. Your grace a lim-it-less o-cean. I'm swept a-way in the tide.

43 B

We draw from the well of Your good-ness, and drink from the wa-ter of life.

BRIDGE 2

45 B/E B/F# G#m7

Your grace a lim-it-less o-cean. I'm swept a-way in the tide. We draw from the well of Your good-ness,

CHORUS

48 B/F# E F# B B/D# E F#

and drink from the wa-ter. Your mer-cy flows like a wild, wild riv-er. Your love is strong like the

52 B B/D# E F# B G#m E G#m

rag-ing sea. God, all Your good-ness goes be-yond all mea-sure, Your praise like a flood pour-ing

56 1. F#sus B 2. F#sus G#m E G#m

out of me. out of me. Your praise like a flood pour-ing

59 F#sus B5 G#m7 B/E B

out of me.

WORSHIP TOGETHER

Wild River

Words and Music by
PHIL WICKHAM and CHRIS TOMLIN

INTRO

E5



VERSE 1

E



There is a foun - tain that nev - er runs dry, —

E

B



for - ev - er flows with wa - ter of life. You nev - er stop mov - ing. You nev - er stop mov - ing.

VERSE 2

E



Where Your riv - er runs, ev - 'ry - thing lives. And where Your riv - er goes, we'll

E

A



nev - er thirst a - gain. You nev - er stop mov - ing. You nev - er stop mov - ing.

CHORUS

A

B

E

E
G#

A

B

E

E
G#



Your mer - cy flows like a wild, wild riv - er. Your love is strong like the rag - ing sea.

A

B

E

C#m

A

C#m

Bsus



God, all Your good - ness goes be - yond all mea - sure, Your praise like a flood pour - ing out of

VERSE 3

E5

E



me. You call me out to walk with You on the sea. —

E

B



E - ven in my doubt, deep calls to deep. You nev - er stop mov - ing. You nev - er stop mov - ing.

CHORUS

31 A B E E/G# A B E E/G#

Your mer-cy flows like a wild, wild riv-er. Your love is strong like the rag-ing sea.

35 A B E C#m A C#m Bsus

God, all Your good-ness goes be-yond all mea-sure, Your praise like a flood pour-ing out of

BRIDGE 1

39 E5 E

me. Your grace a lim-it-less o-cean. I'm swept a-way in the tide.

43 E

We draw from the well— of Your good-ness, and drink from the wa-ter of life.

BRIDGE 2

45 E/A E/B C#m7

Your grace a lim-it-less o-cean. I'm swept a-way in the tide. We draw from the well of Your good-ness,

CHORUS

48 E/B A B E E/G# A B

—and drink from the wa-ter. Your mer-cy flows like a wild, wild riv-er. Your love is strong like the

52 E E/G# A B E C#m A C#m

rag-ing sea. God, all Your good-ness goes be-yond all mea-sure, Your praise like a flood pour-ing

56 1. Bsus E 2. Bsus C#m A C#m

out of me. out of me. Your praise like a flood pour-ing

59 Bsus E5 C#m7 E/A E

out of me.