

Song That the Angels Can't Sing

Words and Music by
MEGAN GARRETT

♩ = 110

F#m A E F#m A E

p Guitars only

- 1. I have a
- 2. I have a
- 3. I have a

VERSE 1, 2, 3

More instruments 2nd, 3rd time

mp F#m A E

song that the an - gels can't sing: You saved my
 song that the an - gels can't sing: You stepped out
 song that the an - gels can't sing: I was

F#m A E

wear - y soul from all my sin, my pain and suf - fer - ing. A
 of Your throne an - d ap - peared in flesh, and made Your - self like me. A
 sen - tenced to death in chains; no hope for be - ing free. You

F#m E F#m

song that the an - gels can't sing: I once was lost but You found me. Oh, I have a song
 song that the an - gels can't sing: I could - n't reach, til You reached me. Oh, I have a song
 song that the an - gels can't sing: I said, come on and fol - low Me. Now I have a song

D2 E

that the an - gels can't sing. 2. I have a
 that the an - gels can't
 that the an - gels can't

CHORUS

A D2 A E(add4) F#m7

sing. Oh, glo - ry hal - le - lu - jah to the Lamb that was slain! Well, I
 sing.
 sing.

17 D2 A E(add4)
 can - not hold — it in! You've giv - en me a brand new name. A

19 D2 A E(add4) F#m7
 song of my de - liv - er - ance; You've bro - ken all — my chains, and I am free. Oh, I

22 E(add4) A A
 have a song — the an - gels can't sing. oh — oh — oh oh —

25 E F#m7 D2 A E
 oh — oh — oh oh — oh — oh oh oh — oh. 3. I have a

2nd time to CODA ⊕ D.S. al CODA %

⊕ CODA

28 E D2 A E F#m7
 Oh — oa — oh — oh — oh oh — oh — oh oh —

mp

31 D E A
 oh — oh — oh oh — oh. 4. I have a

VERSE 4

35 F#m A E F#m A
 song that the an - gels can't — sing: it goes, "A - maz - ing Grace, how sweet the sound that saved

38 E F#m A
 — a wretch like me! I once was lost, but now — I'm found; was

40 E F#m
 blind but now— I see.” Now I have a song

mp building
 43 D E A D
 — that the an - gels can't sing. Oh, I have a song— that an - gels can't

46 F#m D2 E
 sing. Now I have a song— that the an - gels can't sing!

CHORUS

50 *ff* D2 A (add4) F#m7
 glo - ry hal - le - lu - a to the Lamb that— was slain! Well, I

52 D2 A E(add4) D2 A
 can-not hold in— You giv - en me a brand new name. A song of my de-liv - er - ance; You've

55 F#m7 D2
 bro - ken all— my chains, and I— am free. Oh, I

58 E(add4) A D E(add4)
 have a song the an - gels can't— sing! Oh, I have a song the an - gels— can't

61 F#m D E(add4) A
 sing! — Oh, I have a song— the an - gels can't— sing.

Song That the Angels Can't Sing

Words and Music by
MEGAN GARRETT

♩ = 110

Am C G Am C G



p Guitars only

- 1. I have a
- 2. I have a
- 3. I have a

VERSE 1, 2, 3

More instruments 2nd, 3rd time



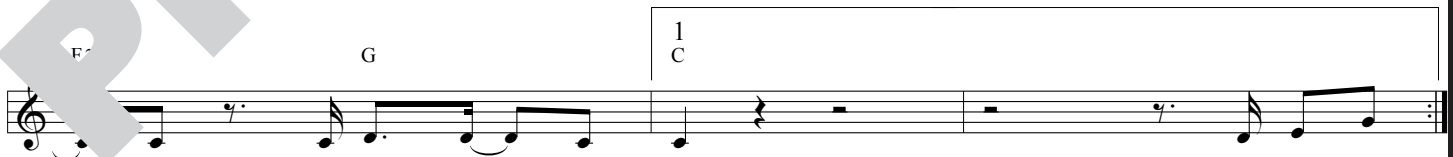
song that the an - gels can't sing. You saved my
 song that the an - gels can't sing. You stepped out
 song that the an - gels can't sing. I was



wear - y soul from all my pain and suf - fer - ing. A
 of Your throne all shed flesh, and made Your - self like me. A
 sen-tenced to chains; no hope for be - ing free. You

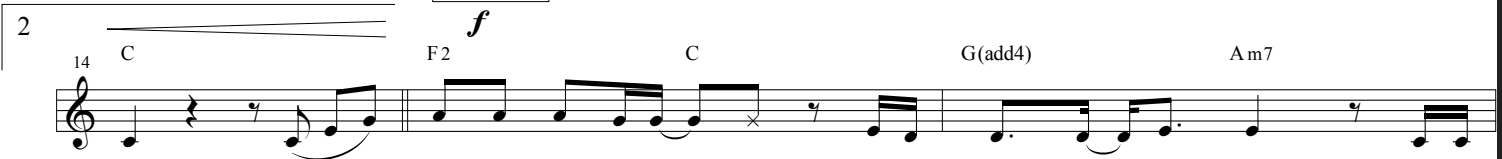


song of the redeemed; I once was lost but You found me. Oh, I have a song
 song of the redeemed; I could - n't reach, til You reached me. Oh, I have a song
 o - red the door and said, come on and fol - low Me. Now I have a song



— that the an - gels can't sing. 2. I have a
 — that the an - gels can't
 — that the an - gels can't

CHORUS



sing. Oh, glo - ry hal - le - lu - jah to the Lamb that was slain! Well, I
 sing.
 sing.

17 F2 C G(add4)
 can - not hold — it in! You've giv - en me a brand new name. — A

19 F2 C G(add4) Am7
 song of my de - liv - er - ance; You've bro - ken all — my chains, and an - gels see. Oh, I

22 G(add4) C C
 have a song the an - gels can't — sing. oh — oh — oh oh —

25 G Am7 F2 G
 oh — oh — oh oh — oh — oh oh oh — oh. 3. I have a

2nd time to CODA ⊕ *D.S. al CODA* %

⊕ CODA

28 G C G Am7
 oh. Oh w... oh — oh — oh oh — oh — oh oh —

31 F2 G C *mp*
 oh — oh — oh oh — oh. 4. I have a

VERSE 4

35 *p* Am C G Am C
 song that the an - gels can't — sing: it goes, "A - maz - ing Grace, how sweet the sound that saved

38 G Am C
 — a wretch — like me! I once was lost, but now — I'm found; was

40 G Am
 blind but now— I see.” Now I have a song—

mp building
 43 F G C F
 — that the an - gels can't sing. Oh, I have a song— that an - gels can't

46 Am F2 G C
 sing. Now I have a song— that the an - gels can't sing!

CHORUS

50 ff F2 C Am7
 glo - ry hal - le - lu - ja to the Lamb that— was slain! Well, I

52 F2 C G(add4) F2 C
 can-not hold it — You've — en me a brand new name. A song of my de - liv - er - ance; You've

55 G(add4) Am7 F2
 — k all— my chains, and I— am free. Oh, I

58 G(add4) C F G(add4)
 have a song the an - gels can't— sing! Oh, I have a song the an - gels— can't

61 Am F G(add4) C
 sing! — Oh, I have a song the an - gels can't— sing.

Song That the Angels Can't Sing

Words and Music by
MEGAN GARRETT

♩ = 110

G#m B F# G#m B F#



p Guitars only

VERSE 1, 2, 3

More instruments 2nd, 3rd time

mp

G#m

B

F#



song that the an - gels can't sing: You saved my
 song that the an - gels can't sing: You stepped out
 song that the an - gels can't sing: I was

- 1. I have a
- 2. I have a
- 3. I have a

7

G#m

B

F#



wear - y soul - f rap - in sin, - my pain - and suf - fer - ing. A
 of Your throne a wrap - in flesh, and made - Your - self like me. A
 sen - tenced to - a life in chains; no hope - for be - ing free. You

9

G#m

F#

G#m



sc of e - deemed; I once was lost but You - found me. Oh, I have a song
 of eous - ness, I could - n't reach, til You - reached me. Oh, I have a song
 o - up the door and said, come on and fol - low Me. Now I have a song

E2

F#

1
B



— that the an - gels - can't sing. 2. I have a
 — that the an - gels - can't
 — that the an - gels - can't

CHORUS

f

B

E2

B

F#(add4)

G#m7



sing. Oh, - glo - ry hal - le - lu - jah to the Lamb that - was slain! Well, I
 sing.
 sing.

17 E2 B F#(add4)

can - not hold it in! You've giv - en me a brand new name. A

19 E2 B F#(add4) G#m7

song of my de - liv - er - ance; You've bro - ken all my chains, a free. Oh, I

22 F#(add4) B E2 B

have a song the an - gels can't sing. a oh oh oh oh

25 F# G#m7 E2 B F#

2nd time to CODA ⊕ D.S. al CODA %

oh oh oh oh oh oh oh oh oh 3. I have a

⊕ CODA

28 F# E2 B F# G#m7

whoa oh oh oh oh oh oh oh oh

31 B F# B mp

oh oh oh oh 4. I have a

VERSE 4

35 G#m B F# G#m B p

song that the an - gels can't sing: it goes, "A - maz - ing Grace, how sweet the sound that saved

38 F# G#m B

a wretch like me! I once was lost, but now I'm found; was

40 F# G#m

blind but now— I see.” Now I have a song

mp building

43 E F# B E

— that the an - gels can't sing. Oh, I have a song— that the an - gels— can't

46 G#m E2 B

sing. Now I have a song— that the an - gels can't sing!

CHORUS

50 *ff* E2 B F#(add4) G#m7

glo - ry hal - le - lu - jah to the Lamb that— was slain! Well, I

52 E2 B F#(add4) E2 B

can-not be at - tin!— You've giv - en me a brand new name. A song of my de - liv - er - ance; You've

55 G#m7 E2

bro - ken all— my chains, and I— am free. Oh, I

58 F#(add4) B E F#(add4)

have a song the an - gels can't— sing! Oh, I have a song the an - gels— can't

61 G#m E F#(add4) B

sing!— Oh, I have a song— the an - gels can't— sing.