

Sing to the Lord (Banner)

Words and Music by
 PAT BARRETT, CHRIS TOMLIN,
 BEN SMITH, DANIEL BASHTA,
 and ED CASH

INTRO Quietly (♩=74)

F B^b F F B^b F

VERSE 1

5 F B^b F B^b

Sing to the Lord a new song. Sing to the Lord all the earth.

8 F B^{b2} F

In the beauty of His holiness, the beauty of His holiness.

VERSE 2 & 3

13 F B^b F B^b F

Sing to the Lord a new song. Sing to the Lord, O my soul, in the wonders of His
 Sing to the Lord a new song. Wor-ship the Lord ev-er-more in the glo-ry of His

CHORUS

17 B^{b2} F B^b

might-y hand, the won-ders of His might-y hand. Great is the Lord, we cry,
 maj-es-ty, the glo-ry of His maj-es-ty.

22 C^{sus} F C^F F B^b E^A B^b E^A B^b Dm

great-ly to be praised. Let ev-'ry na-tion rise and say, our God reigns, our God

1. (Back to m. 13)

2.

CHORUS

28 C^{sus} C^{sus} B^b C^{sus} F C^F

reigns. reigns. Great is the Lord, we cry, and great-ly to be praised.

33 F B^b E^A B^b E^A B^b C^{sus} Dm C^{sus}

Let ev-'ry na-tion rise and say, our God reigns, our God reigns. Your

Sing to the Lord (Banner) - 2 of 2

BRIDGE

38 F B^b/F F Dm C B^b F

ban-ner, Your ban-ner o-ver us is love, un-fail-ing love. Your ban-ner, Your ban-ner

43 B^b/F F Dm C B^b F B^b/F F C/E Dm C

o-ver us is love, un-fail-ing love. Your ban-ner, Your ban-ner o-ver us is love, un-fail-ing

49 B^b Dm C B^b E/A Dm C B^b

love. Your ban-ner, Your ban-ner o-ver us is love, un-fail-ing love. Great is—the

CHORUS

54 B^b $Csus$ F C/F F B^b E/A B^b E/A

Lord, we cry, great-ly to be—praised. Let ev-'ry na-tion rise and

59 B^b $Csus$ Dm

say, our God reigns, our God reigns. Great is—the reigns.

1. $Csus$ (Back to m. 54) 2. $Csus$

INTERLUDE

63 F B^b F B^b

Repeat (Back to m. 63) Last time B^b

Praise

DOXOLOGY (Thomse Ken, Louis Bourgeois)

68 F B^b C/B^b F B^b F/B^b $Csus$

God, from whom all bless-ings flow. Praise Him, all crea-tures here be-low. Praise

74 $Dm(4)$ F E/A B^b C/B^b Dm F B^b2 E/C C Dm

Him a-bove, ye heav-'nly host. Praise Fa-ther, Son, and Ho-ly Ghost. Praise

80 E/A B^b2 E/C C Dm E/A B^b2 E/C C F

Fa-ther, Son, and Ho-ly Ghost. Praise Fa-ther, Son, and Ho-ly Ghost.

Sing to the Lord (Banner)

Words and Music by
PAT BARRETT, CHRIS TOMLIN,
BEN SMITH, DANIEL BASHTA,
and ED CASH

INTRO

Quietly (♩=74)

A D A A D A

VERSE 1

5 A D A D

Sing to the Lord a new song. Sing to the Lord all the earth.

8 A D2 A

In the beauty of His holiness, the beauty of His holiness.

VERSE 2 & 3

13 A D A D A

Sing to the Lord a new song. Sing to the Lord, O my soul, in the wonders of His
Sing to the Lord a new song. Wor-ship the Lord ev-er-more in the glo-ry of His

CHORUS

17 D2 A D

might-y hand, the won-ders of His might-y hand. Great is the Lord, we cry,
maj-es-ty, yhe glo-ry of His maj-es-ty.

22 Esus A E/A A D A/C# D A/C# D F#m

great-ly to be praised. Let ev-'ry na-tion rise and say, our God reigns, our God

28 1. (Back to m. 13) Esus 2. CHORUS Esus A E/A

reigns. reigns. Great is the Lord, we cry, and great-ly to be praised.

33 A D A/C# D A/C# D Esus F#m Esus

Let ev-'ry na-tion rise and say, our God reigns, our God reigns. Your

BRIDGE

38 A $\frac{D}{A}$ A F#m E D A

ban-ner, Your ban-ner o - ver us is love, un-fail - ing love. Your ban-ner, Your ban-ner

43 $\frac{D}{A}$ A F#m E D A $\frac{D}{A}$ A $\frac{E}{G\#}$ F#m E

o - ver us is love, un-fail - ing love. Your ban-ner, Your ban-ner o - ver us is love, un-fail - ing

49 D F#m E D $\frac{A}{C\#}$ F#m E D

love. Your ban-ner, Your ban-ner o - ver us is love, un-fail - ing love. Great is— the

CHORUS

54 D Esus A $\frac{E}{A}$ A D $\frac{A}{C\#}$ D $\frac{A}{C\#}$

Lord, we cry, great - ly to be— praised. Let ev - 'ry na - tion rise and

59 D Esus F#m

say, our God reigns, our God reigns. Great is— the reigns.

1. (Back to m. 54) 2.

Esus Esus

INTERLUDE

63 A D A

Repeat (Back to m. 63) Last time

D D

Praise

DOXOLOGY (Thomse Ken, Louis Bourgeois)

68 A D $\frac{E}{D}$ A D $\frac{A}{D}$ Esus

God, from whom all bless - ings flow. Praise Him, all crea - tures here be - low. Praise

74 F#m(4) A $\frac{A}{C\#}$ D $\frac{E}{D}$ F#m A D2 $\frac{A}{E}$ E F#m

Him a - bove, ye heav - 'nly host. Praise Fa - ther, Son, and Ho - ly Ghost. Praise

80 $\frac{A}{C\#}$ D2 $\frac{A}{E}$ E F#m $\frac{A}{C\#}$ D2 $\frac{A}{E}$ E A

Fa - ther, Son, and Ho - ly Ghost. Praise Fa - ther, Son, and Ho - ly Ghost.

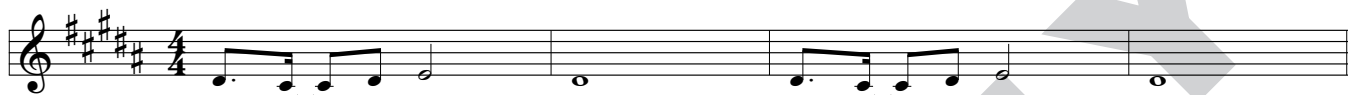
Sing to the Lord (Banner)

Words and Music by
PAT BARRETT, CHRIS TOMLIN,
BEN SMITH, DANIEL BASHTA,
and ED CASH

INTRO

Quietly (♩=74)

B E B B E B



VERSE 1

B E B E



Sing to the Lord a new song. Sing to the Lord all the earth.

B E2 B



In the beauty of His holiness, the beauty of His holiness.

VERSE 2 & 3

B E B E B



Sing to the Lord a new song. Sing to the Lord, O my soul, in the wonders of His
Sing to the Lord a new song. Wor-ship the Lord ev-er-more in the glo-ry of His

CHORUS

E2 B E



might-y hand, the won-ders of His might-y hand. Great is the Lord, we cry,
maj-es-ty, the glo-ry of His maj-es-ty.

F#sus B F# B E B/D# E B/D# E G#m



great-ly to be praised. Let ev-'ry na-tion rise and say, our God reigns, our God

1. (Back to m. 13)

CHORUS

F#sus F#sus E F#sus B F# B



reigns. reigns. Great is the Lord, we cry, and great-ly to be praised.

B E B/D# E B/D# E F#sus G#m F#sus



Let ev-'ry na-tion rise and say, our God reigns, our God reigns. Your

BRIDGE

38 B $\frac{E}{B}$ B G#m F# E B

ban-ner, Your ban-ner o - ver us is love, un-fail - ing love. Your ban-ner, Your ban-ner

43 $\frac{E}{B}$ B G#m F# E B $\frac{E}{B}$ B $\frac{F\#}{A\#}$ G#m F#

o - ver us is love, un-fail - ing love. Your ban-ner, Your ban-ner o - ver us is love, un-fail - ing

49 E G#m F# E $\frac{B}{D\#}$ G#m F# E

love. Your ban-ner, Your ban-ner o - ver us is love, un-fail - ing love. Great is— the

CHORUS

54 E F#sus B $\frac{F\#}{B}$ B E $\frac{B}{D\#}$ E $\frac{B}{D\#}$

Lord, we cry, great - ly to be— praised. Let ev - 'ry na - tion rise and

59 E F#sus G#m F#sus F#sus F#sus

say, our God reigns, our God reigns. Great is— the reigns.

INTERLUDE

63 B E B

Repeat (Back to m. 63) **Last time**

E E

Praise

DOXOLOGY (Thomse Ken, Louis Bourgeois)

68 B E $\frac{F\#}{E}$ B E $\frac{B}{E}$ F#sus

God, from whom all bless - ings flow. Praise Him, all crea - tures here be - low. Praise

74 G#m(4) B $\frac{B}{D\#}$ E $\frac{F\#}{E}$ G#m B E2 $\frac{B}{F\#}$ F# G#m

Him a - bove, ye heav - 'nly host. Praise Fa - ther, Son, and Ho - ly Ghost. Praise

80 $\frac{B}{D\#}$ E2 $\frac{B}{F\#}$ F# G#m $\frac{B}{D\#}$ E2 $\frac{B}{F\#}$ F# B

Fa - ther, Son, and Ho - ly Ghost. Praise Fa - ther, Son, and Ho - ly Ghost.