

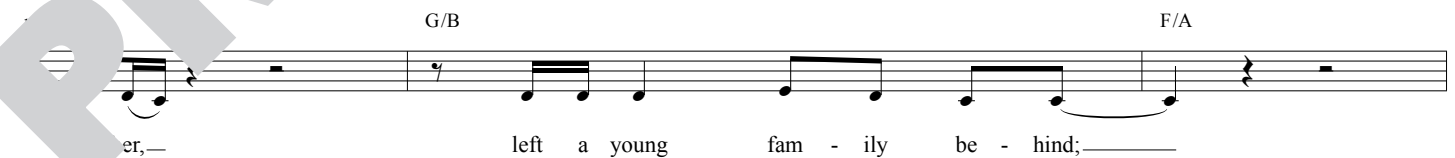
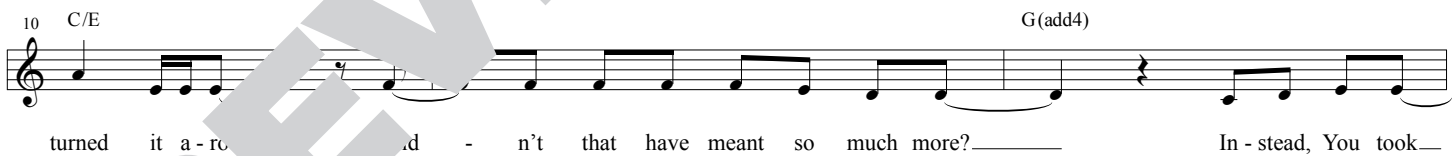
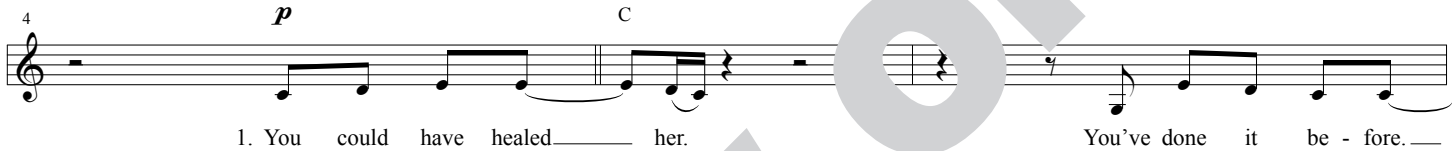
Prove Me Wrong

Words and Music by
MANDISA and
DY MORGAN

Freely, with feeling (♩ = 84)



VERSE 1



PRE-CHORUS

19 F6 G(add4) *mf* Am C
 — we're all here, — ask - ing why. — And I've read Your ways high -

22 Dm7 C Dm7 F2
 er, — but I just don't — un - der - stand. Trying to

25 Am C Dm7 C Dm7
 hold on - to my faith, but — it's slip ping — through my

CHORUS

28 F2 Gsus C F/A
 hands. Prove me wrong. —

31 G/B Csus C Am
 Prove me wrong. — These waves will take me un - der, my —

34 Fm/Ab C/G F#dim7
 in, will get o - ver, and this pain won't make me strong. —

VERSE 2

37 F/A C
 Prove me wrong. — 2. Would it be wrong — if —

40 G/B F/A Cmaj7/G
 I asked You for proof. — I wish that I could

43 Dm/F C/E F6
 just be - lieve with - out ques - tion - ing. I'm just be - ing hon - with You.

PRE-CHORUS

46 G(add4) *mf* Am C Dm7
 And they say Your ways are bet - te - but I still

49 Dm7 F2 Am C
 don't un - der - stand. And I can't hold me to - geth -

52 Dm7 C F2 Gsus
 er, and this can be Your per - fect plan.

CHORUS

55 C *mp* F/A G/B
 ve me wrong. Prove me wrong.

BRIDGE

58 Csus *f* Am Em/G
 All this pain, this sor -

61 E7/G# Am
 - row in my heart. I can't find

64 Em/G D9/F# D9
 my way out of the dark.

CHORUS

mp

67 C F/C G2/C

Prove me wrong. Prove me wrong.

70 F C *mf* Am G

You know my doubts and

73 D7/F# G G/C C

I need to know You're here. Still, the storm

76 F/A Bdim E7

ges on: Or, these

79 Am Ab C/G

waves will take me under, heart will not get o - ver, and this pain won't make me strong.

82 F#dim7 *p* C

Prove me wrong.

85 G/B G7

PRE-CHORUS

19 E6 F#(add4) *mf* G#m B

— we're all here, — ask - ing why. — And I've read Your ways are high -

22 C#m7 B C#m7 E2

er, — but I just don't — un - der - stand. Trying to

25 G#m B C#m7 C

hold on - to my faith, but — it's slip - ping — through my

CHORUS

28 E2 F#sus B E/G#

hands. Prove me wrong. —

31 F#/A# B G#m

love me wrong. — These waves will take me un - der, my —

34 B/F# E#dim7

head will not get o - ver, and this pain won't make me strong. —

VERSE 2

37 B E/G# B

Prove me wrong. — 2. Would it be wrong — if —

40 F#/A# E/G# Bmaj7/F#

I asked You for proof. — I wish that I could

43 C#m/E B/D# E6
 just be - lieve with - out ques - tion - ing. I'm just be - ing hon - o - red with You.

PRE-CHORUS

46 F#(add4) G#m B C#m7 B
mf
 And they say Your ways are bet - ter but I still

49 C#m7 E2 B
 don't un - der - stand. And I can't hold me to - geth - er

52 C#m7 B E2 F#sus
 er, and this is Your per - fect plan.

CHORUS

55 B *mp* E/G# F#/A#
 Prove me wrong. Prove me wrong.

BRIDGE

58 B G#m D#m/F#
f
 All this pain, this sor -

61 E6 D#7/F# G#m
 - row in my heart. I can't find

64 D#m/F# C#9/E# C#9
 my way out of the dark.

CHORUS

mp

67 B E/B F#2/B

Prove me wrong. Prove me wrong.

70 E B *mf* G#m F#

You know my doubts and fears.

73 C#7/E# F# B

I need to know You're here. Still, the storm

76 E/G# A#dim D#7

rages on: Or, these

79 G#m Em/G B/F#

waves will not un-dermine my heart will not get o-ver, and this pain won't make me strong.

82 *p* B

Prove me wrong.

85 E/G# F#/A# F#7

Prove me wrong.

Prove Me Wrong

Words and Music by
MANDISA and
DY MORGAN

Freely, with feeling (♩ = 84)

D A/C# A7

VERSE 1

4 *p* D

1. You could have healed _____ her. You've done it be - fore. _____

7 G/B Dmaj7/A Em/G

_____ You could have sent the an - gels down _____ and

10 D/F# G6 A(add4)

turned it a _____ ould - n't that have meant so much more? _____ In - stead, You took _____

D A/C# G/B

her, _____ left a young fam - ily be - hind; _____

16 Dmaj7/A Em/G D/F#

and I'm won - d'ring where You are. _____ You seem so far, _____ while _____

PRE-CHORUS

19 G6 A(add4) *mf* Bm D

— we're all here,— ask - ing why. ———— And I've read Your ways the high -

22 Em7 D Em7 G2

er, ——— but I just don't ——— un - der - stand. Trying to

25 Bm D Em7 E7

hold on - to my faith, but ——— it's slip ping ——— through my

CHORUS

28 G2 Asus D G/B

hands. Prove me wrong. ———

31 A/C# D Bm

e me with ——— These waves will take me un - der, my —

34 G D/A G#dim7

art not get o - ver, and this pain won't make me strong. ———

VERSE 2

37 D G/B D

Prove me wrong. ——— 2. Would it be wrong ——— if —

40 A/C# G/B Dmaj7/A

I asked You for proof. ——— I wish that I could

43 Em/G D/F# G6
 just be - lieve with - out ques - tion - ing. I'm just be - ing hon with You.

PRE-CHORUS

46 A(add4) *mf* Bm D Em7
 And they say Your ways are bet - but I still

49 Em7 G2 Bm D
 don't un - der - stand. And can't hold me to - geth -

52 Em7 D G2 Asus
 er, and this ca be Your per - fect plan.

CHORUS

55 D *mp* G/B A/C#
 Prove e wrong. Prove me wrong.

BRIDGE

58 D D *f* Bm F#m/A
 All this pain, this sor -

61 G6 F#7/A# Bm
 - row in my heart. I can't find

64 F#m/A E9/G# E9
 my way out of the dark.

CHORUS

mp

67 D G/D A2/D

Prove me wrong. — Prove me wrong. —

70 G D Bm A

You know my doubts — and rs. —

73 E7/G# A D

I need to know — You're here. — Still, the storm

76 G/B C#dim F#7

— ges on: — Or, these

79 Bm Gm/B D/A

waves will take me on - der, my — heart will not get o - ver, and this pain won't make me strong. —

82 G D

Prove me wrong. —

85 G/B A/C# A7

—