

# Lead Me To The Cross

♩ = 75

Words and Music by Brooke Fraser

B<sup>m</sup> A G D A/C<sup>#</sup> B<sup>m</sup> A E<sup>m7</sup>

**A** B<sup>m</sup> A G D A/C<sup>#</sup>

V1: Sa-viour I come, \_\_\_\_\_ qui \_\_\_\_\_ m \_\_\_\_\_ il, \_\_\_\_\_ Re-mem \_\_\_\_\_ ber \_\_\_\_\_  
 V2: You were as I, \_\_\_\_\_ temp \_\_\_\_\_ Hu - man. \_\_\_\_\_

B<sup>m</sup> A G

re - demp-tion's hill, \_\_\_\_\_ where Your blood was spilled, \_\_\_\_\_ for my ran -  
 the word be - came flesh, \_\_\_\_\_ bore my sin in death. \_\_\_\_\_ Now, You're ri -

© 2006 Sony / ATV Music Publishing Australia (Aust. & NZ only)  
 Hillsong Publishing (Rest of world). All Rights Reserved.  
 Used by Permission. CCLI Song No. 4785828

D



A/C#



E m7



A sus4

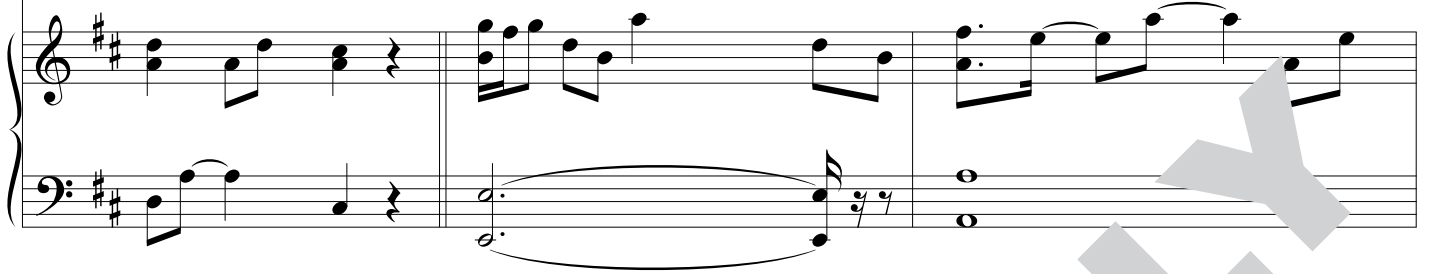


A



som.\_\_\_\_  
sen.\_\_\_\_

P'Chs: Ev - ery - thing \_\_\_\_ I once held \_\_\_\_ dear, \_\_\_\_ I count \_\_\_\_



B m



A



GMaj7



\_\_\_\_ it all \_\_\_\_ as loss. \_\_\_\_ Ch lead me to the cross,



GMaj7



D



A



GMaj7



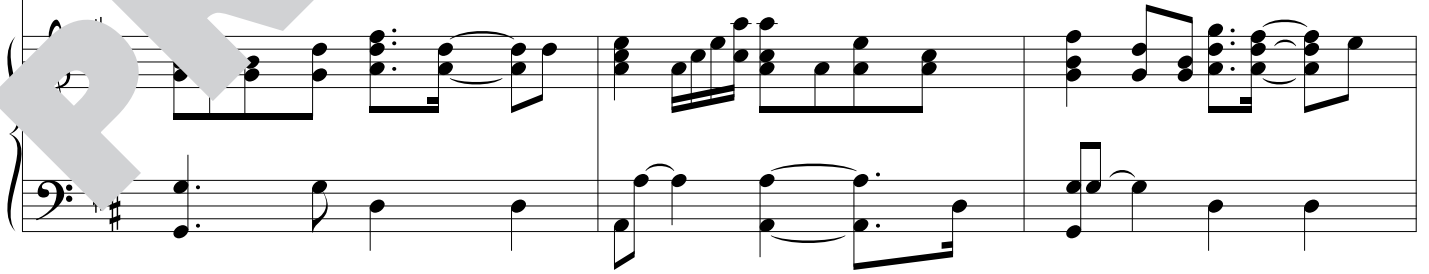
D

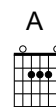
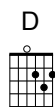
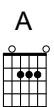


B



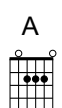
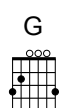
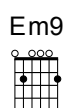
ere \_\_\_\_ ve poured \_\_\_\_ out. \_\_\_\_ Bring me to my knees, \_\_\_\_ Lord, I lay me \_\_\_\_ down.





Last to

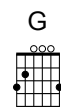
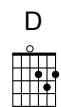
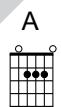
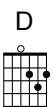
Rid me of my - self, I be - long to You. Oh, lead me.



DC 1st x

Lead me to the cross. Bdg: To Your

C



an To Your heart.

A D GMaj7

Lead me to Your heart.

A D G A D al Coda

Lead me to Your heart. Lead me to the cross

D Em9 GMaj7 A GMaj7 D

Coda

Chs 2: Lead me to the cross, where Your love poured out.



# Lead Me To The Cross

♩ = 75

Words and Music by Brooke Fraser

C#m 4fr.
B
A
E
B/D#
C#m 4fr.
B
F#m7

**A** C#m 4fr. B A E B/D#

V1: Sa-viour I come, \_\_\_\_\_ qui \_\_\_\_\_ ul, \_\_\_\_\_ Re-mem-ber \_\_\_\_\_  
 V2: You were as I, \_\_\_\_\_ temp \_\_\_\_\_ Hu-man. \_\_\_\_\_

C#m 4fr. B A

re - demp-tion's hill, \_\_\_\_\_ where Your blood was spilled, \_\_\_\_\_ for my ran-  
 The word be - came flesh, \_\_\_\_\_ bore my sin in death. \_\_\_\_\_ Now, You're ri -

© 2006 Sony / ATV Music Publishing Australia (Aust. & NZ only)  
 Hillsong Publishing (Rest of world). All Rights Reserved.  
 Used by Permission. CCLI Song No. 4785828

E B/D# F#m7 B sus4 B


som. — sen. — P'Chs: Ev - ery - thing I once held dear, I count

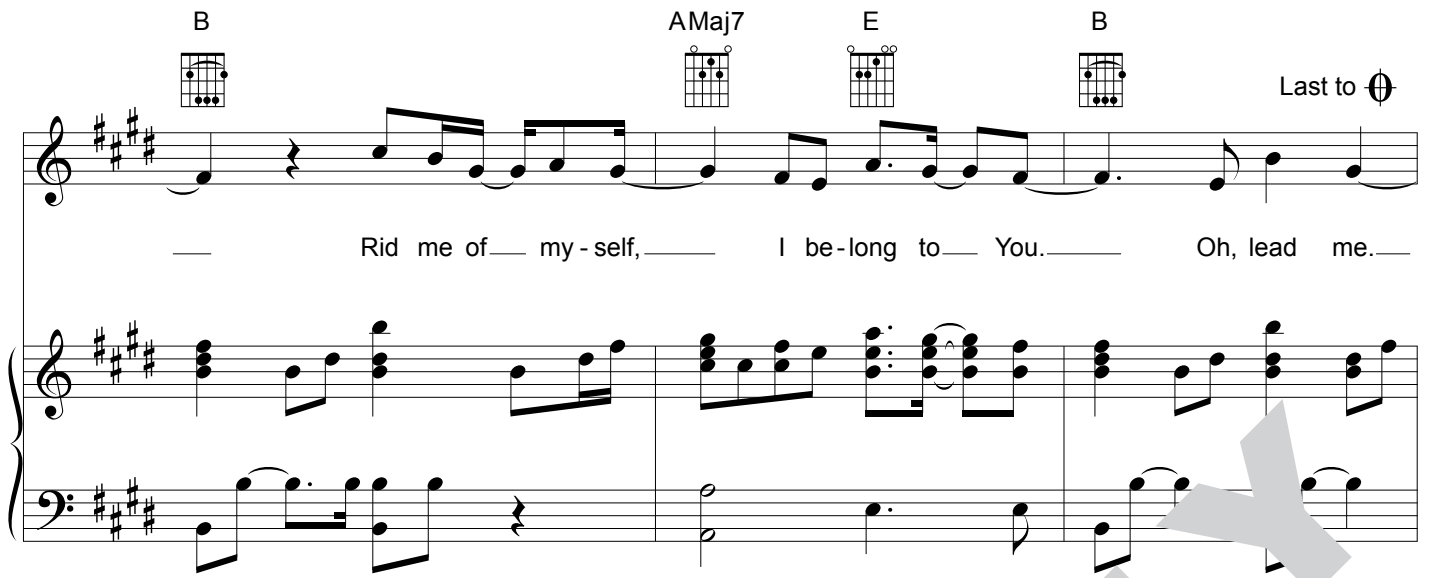
C#m B AMaj7

— it all — as loss. — Lead me to the cross,

AMaj7 E B AMaj7 E

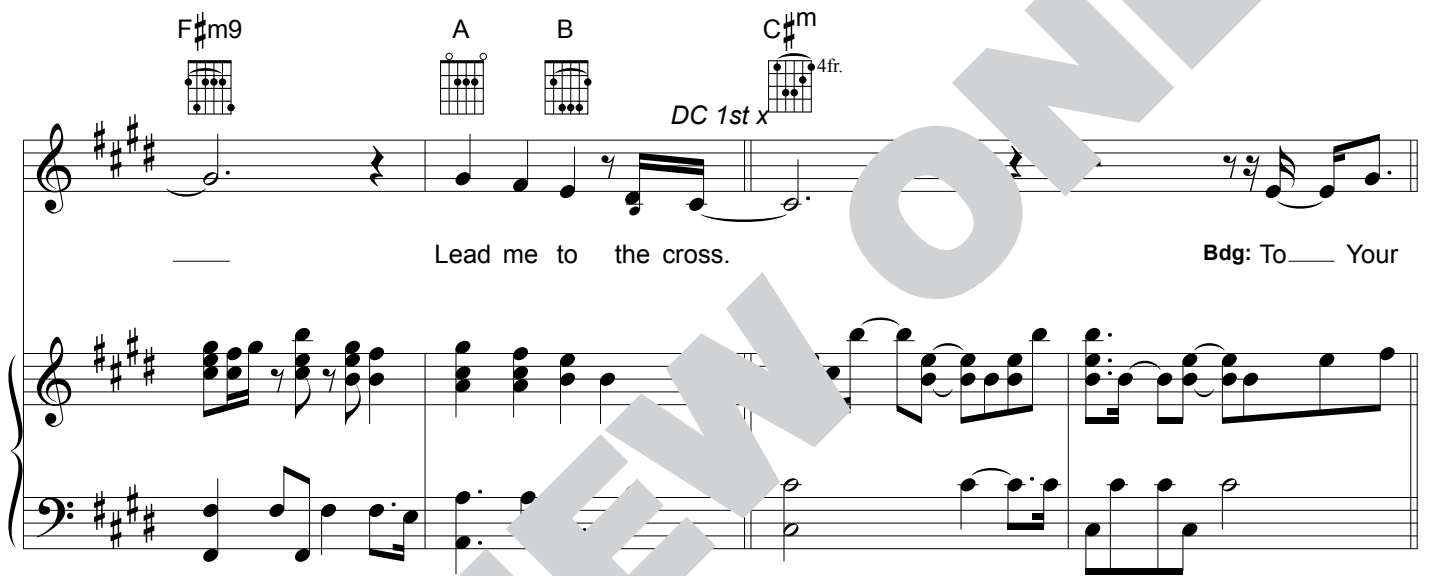
the love poured out. — Bring me to my knees, — Lord, I lay me — down.

B AMaj7 E B Last to 



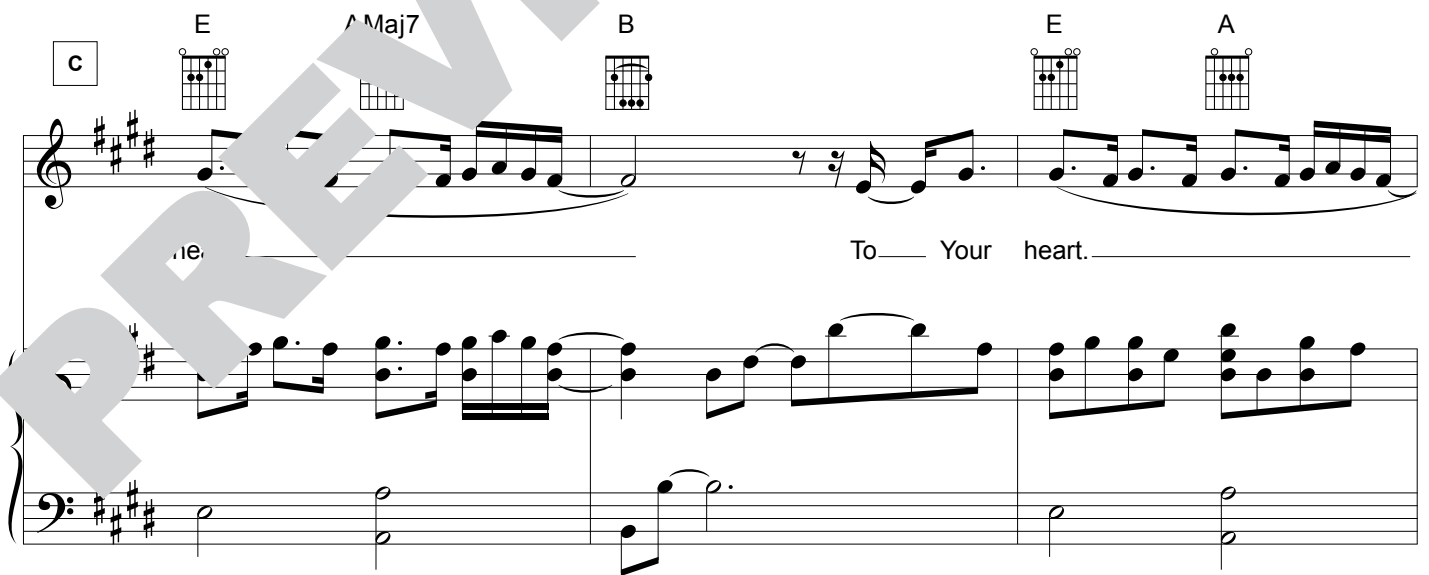
Rid me of my - self, I be - long to You. Oh, lead me.

F#m9 A B C#m DC 1st x 4fr.



Lead me to the cross. Bdg: To Your

c E AMaj7 B E A



ie. To Your heart.



B E AMaj7

Lead me to Your heart.

B E A B D<sup>al Coda</sup>

Lead me to Your heart. Lead me to the cross

D F#m9 AMaj7 B AMaj7 E

Coda

Chs 2: Lead me to the cross, where Your love poured out.

B AMaj7 E B

Bring me to my knees, Lord I lay me down. Rid me of my-self,

AMaj7 E B

I be-long to You. Oh, lea

A B N.C.

Let me the cross.

# Lead Me To The Cross

♩ = 75

Words and Music by Brooke Fraser

C<sup>m</sup> 
B<sup>b</sup> 
A<sup>b</sup> 
E<sup>b</sup> 
B<sup>b</sup>/D 
C<sup>m</sup> 
B<sup>b</sup> 
F<sup>m</sup>7

A 
C<sup>m</sup> 
B<sup>b</sup> 
A<sup>b</sup> 
E<sup>b</sup> 
B<sup>b</sup>/D

V1: Sa-viour I come, \_\_\_\_\_ qui \_\_\_\_\_, \_\_\_\_\_ Re-mem-ber \_\_\_\_\_

V2: You were as I, \_\_\_\_\_ temp- \_\_\_\_\_ Hu-man.

C<sup>m</sup> 
B<sup>b</sup> 
A<sup>b</sup>

re - demp-tion's hill, \_\_\_\_\_ where Your blood was spilled, \_\_\_\_\_ for my ran-

The word be - came flesh, \_\_\_\_\_ bore my sin in death. \_\_\_\_\_ Now, You're ri -

E $\flat$       B $\flat$ /D      Fm7      B $\flat$ sus4      B $\flat$

som.\_\_\_\_      P'Chs: Ev - ery - thing I      once held dear,      I count  
sen.\_\_\_\_

C $^m$       B $\flat$       A $\flat$ Maj7

\_\_\_\_ it all\_\_\_\_ as loss.\_\_\_\_      Chr Lead me to the cross,

A $\flat$ Maj7      E $\flat$       A $\flat$ Maj7      E $\flat$

when love poured out.\_\_\_\_      Bring me to my knees,\_\_\_\_      Lord, I lay me down.

B $\flat$       A $\flat$ Maj7      E $\flat$       B $\flat$       Last to  $\emptyset$

Rid me of my - self, I be-long to You. Oh, lead me.

Fm9      A $\flat$       B $\flat$       C<sup>m</sup>      DC 1st x

Lead me to the cross. Bdg: To Your

c      E $\flat$       A $\flat$ Maj7      B $\flat$       E $\flat$       A $\flat$       4fr.

ear To Your heart.

B $\flat$  E $\flat$  A $\flat$ Maj7 4fr.

Lead me to Your heart.

B $\flat$  E $\flat$  A $\flat$  4fr. B $\flat$  D $\flat$  al Coda

Lead me to Your heart. Lead me to the cross

D Coda Fm $9$  A $\flat$ Maj7 4fr. B $\flat$  A $\flat$ Maj7 4fr. E $\flat$

Chs 2: Lead me to the cross, where Your love poured out.

B $\flat$                       A $\flat$ Maj7                      E $\flat$                       B $\flat$

Bring me to my knees, Lord I lay me down. Rid me of my-self,

A $\flat$ Maj7                      E $\flat$                       B $\flat$

I be-long to You. Oh, lea

A $\flat$                       B $\flat$                       N.C.

lead me to the cross.