

WORSHIP TOGETHER

Jesus Is Here

Words and Music by
TRAVIS COTTRELL, BEDE KORPORAAL
and DAVID MOFFITT
Arranged by Travis Cottrell

In celebration (♩=116)

1 *mp*

The one true King has come; the Fa - ther's on - ly Son

G G Em

5

— came down for all of us — to con-quer the world with love.

D C

9

— The Prom - ise turned to flesh, — the proph - et's

G

12

words de-scend. Our Sav-ior has come to earth — with free-dom for

Em D

16

all the world. Let heav-en and na - ture — sing — praise to the

C G

mf

20

new - born — King. — Christ-mas is all a-bout the Fa - ther's love for

Em D

24

— us. — Join with the an - gels on high, — sing with the

C G

28

saints in the choir. Christ-mas is all a-bout the Fa - ther's love for

Em D

Detailed description: This system contains the first two staves of music. The top staff is a vocal line in treble clef with a key signature of one sharp (F#). It begins with a half note G4, followed by quarter notes A4, B4, and C5. There is a quarter rest, then a triplet of quarter notes D5, E5, and F#5. This is followed by quarter notes G5, F#5, and E5, and ends with a quarter note D5. The piano accompaniment consists of two staves. The right hand plays a rhythmic pattern of eighth notes: G4, A4, B4, C5, D5, E5, F#5, G5. The left hand plays a simple bass line with quarter notes: G2, B1, D2, F#2.

32

us. A man - ger made a throne to wel-come

C G

mf

Detailed description: This system contains the second two staves of music. The vocal line continues with quarter notes G4, A4, B4, and C5. There is a quarter rest, then quarter notes D5, E5, and F#5. The piano accompaniment continues with the same rhythmic pattern in the right hand. The left hand has a long note G2 in the first two measures, then moves to a rhythmic pattern of quarter notes: B1, D2, F#2, G2. A dynamic marking of *mf* is placed above the piano part.

36

Heav - en's Son. The un - i - verse roars with praise, for Je - sus is

Em7 D

Detailed description: This system contains the third two staves of music. The vocal line begins with a half note G4, followed by quarter notes A4, B4, and C5. There is a quarter rest, then a triplet of quarter notes D5, E5, and F#5. This is followed by quarter notes G5, F#5, and E5, and ends with a quarter note D5. The piano accompaniment features a more complex bass line with quarter notes: G2, B1, D2, F#2, G2, B1, D2, F#2. A dynamic marking of *mf* is also present.

40

born this day. Let heav - en and na - ture sing praise to the

C2 G

Detailed description: This system contains the final two staves of music. The vocal line begins with a half note G4, followed by quarter notes A4, B4, and C5. There is a quarter rest, then a triplet of quarter notes D5, E5, and F#5. This is followed by quarter notes G5, F#5, and E5, and ends with a quarter note D5. The piano accompaniment continues with the same rhythmic pattern in the right hand. The left hand has a long note G2 in the first two measures, then moves to a rhythmic pattern of quarter notes: B1, D2, F#2, G2.

44

new - born King. Christ-mas is all a-bout the Fa - ther's love

Em7 D

48

for us. Join with the an - gels on high, sing with the

C2 G

52

saints in the choir. Christ-mas is all a-bout the Fa - ther's love for

Em7 D

56

— us. — Je - sus is here. Heav-en has come.

C2 G D

61

Christ-mas is Him, sent down for us.

Em7 C2

65

mf O COME, O COME, EMMANUEL (Traditional)

Re - joice! Re - joice! Em - man - u -

D Em Am Bm7

mf

69

el shall come to thee, O Is - ra - el. Re -

C D Em7 C D Em

f

74

joice! Re - joice! Em -

D Em

78

man - u - el shall come to thee, O Is - ra -

Am Bm7 C D Em C D

82

el. *f* Let heav - en and na - ture sing praise to the

Esus E A *f*

86

new - born King. Christ - mas is all a - bout the Fa - ther's love

F#m7 E

90

for us. Join with the an - gels on high, sing with the

D2 A

94

saints — in the choir. Christ-mas is all a-bout the Fa - ther's love for

F#m7 E

98

— us. — Je - sus is here. Oh, yes. —

D2 A

102

Heav - en has come. Oh, — Christ-mas is Him,

E F#m7

105

sent down for us.

D2 A

WORSHIP TOGETHER

Jesus Is Here

Words and Music by
TRAVIS COTTRELL, BEDE KORPORAAL
and DAVID MOFFITT
Arranged by Travis Cottrell

In celebration (♩=116)

1 *mp*

The one true King has come; — the Fa - ther's on - ly Son

A A F#m

5

— came down for all of us — to con-quer the world with love.

E D

9

— The Prom - ise turned to flesh, — the proph - et's

A

12

words de-scend. Our Sav-ior has come to earth with free-dom for

F#m E

16

all the world. Let heav-en and na - ture sing praise to the

D A

mf

20

new - born King. Christ-mas is all a-bout the Fa - ther's love for

F#m E

24

— us. — Join with the an - gels on high, sing with the

D A

28

saints in the choir. Christ-mas is all a-bout the Fa - ther's love for

F#m *E*

32

us. A man - ger made a throne to wel-come

D *A*

mf

36

Heav - en's Son. The un - i-verse roars with praise, for Je - sus is

F#m7 *E*

40

born this day. Let heav-en and na - ture sing praise to the

D2 *A*

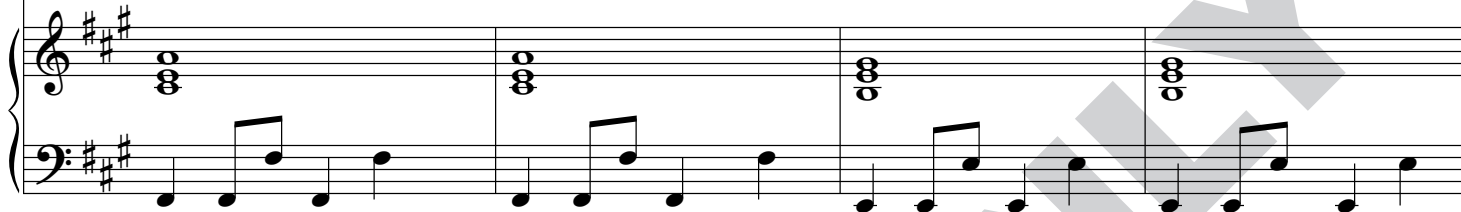
44



new - born King. Christ-mas is all a-bout the Fa - ther's love

F#m7

E



48



for us. Join with the an - gels on high, sing with the

D2

A



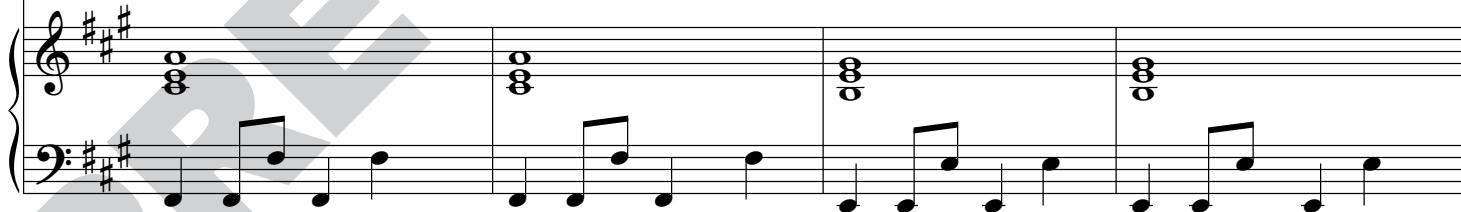
52



saints in the choir. Christ-mas is all a-bout the Fa - ther's love for

F#m7

E



56



us. Je - sus is here. Heav-en has come.

D2

A

E



61

Christ-mas is Him, sent down for us.

F#m7 D2

65

mf O COME, O COME, EMMANUEL (Traditional)

Re - joice! Re - joice! Em - man - u -

E F#m Bm C#m7

mf

69

el shall come to thee, O Is - ra - el. Re -

D E F#m7 D E F#m

f

74

joice! Re - joice! Em -

E F#m

78

man - u - el shall come to thee, O Is - ra -

Bm C#m7 D E F#m D E

82

el. *f* Let heav - en and na - ture sing praise to the

F#sus F# B

86

new - born King. Christ - mas is all a - bout the Fa - ther's love

G#m7 F#

90

for us. Join with the an - gels on high, sing with the

E2 B

94

saints in the choir. Christ-mas is all a-bout the Fa-ther's love for

G#m7 F#

98

us. Je-sus is here. Oh, yes.

E2 B

102

Heav-en has come. Oh, Christ-mas is Him,

F# G#m7

105

sent down for us.

E2 B

WORSHIP TOGETHER

Jesus Is Here

Words and Music by
TRAVIS COTTRELL, BEDE KORPORAAL
and DAVID MOFFITT
Arranged by Travis Cottrell

In celebration (♩=116)

1 *mp*

The one true King has come; — the Fa - ther's on - ly Son

C C Am

5

— came down for all of us — to con-quer the world with love.

G F

9

— The Prom - ise turned to flesh, — the proph - et's

C

12

words de-scend. — Our Sav-ior has come to earth — with free-dom for

Am G

16

all the world. — Let heav-en and na - ture — sing — praise to the

F C

mf

20

new - born — King. — Christ-mas is all a - bout the Fa - ther's love for

Am G

24

— us. — Join with the an - gels on high, — sing with the

F C

28

saints in the choir. Christ-mas is all a-bout the Fa-ther's love for

Am G

32

us. A man-ger made a throne to wel-come

F C

mf

36

Heav-en's Son. The un-i-verse roars with praise, for Je-sus is

Am7 G

40

born this day. Let heav-en and na-ture sing praise to the

F2 C

44

new - born King. Christ-mas is all a-bout the Fa - ther's love

Am7 G

48

for us. Join with the an - gels on high, sing with the

F2 C

52

saints in the choir. Christ-mas is all a-bout the Fa - ther's love for

Am7 G

56

us. Je - sus is here. Heav-en has come.

F2 C G

f

61

Christ-mas is Him, sent down for us.

Am7 F2

65

mf O COME, O COME, EMMANUEL (Traditional)

Re - joice! Re - joice! Em - man - u -

G Am Dm Em7

mf

69

el shall come to thee, O Is - ra - el. Re -

F G Am7 F G Am

f

74

joice! Re - joice! Em -

G Am

78

man - u - el shall come to thee, O Is - ra -

Dm Em7 F G Am F G

82

el. *f* Let heav - en and na - ture *f* sing praise to the

Asus A D

86

new - born King. Christ - mas is all a - bout the Fa - ther's love

Bm7 A

90

for us. Join with the an - gels on high, sing with the

G2 D

94

saints in the choir. Christ-mas is all a-bout the Fa-ther's love for

Bm7 A

98

us. Je-sus is here. Oh, yes.

G2 D

102

Heav-en has come. Oh, Christ-mas is Him,

A Bm7

105

sent down for us.

G2 D