

Here With Me

Words and Music by
TIM HUGHES, NICK HERBERT,
and PHIL WICKHAM

♩ = 70

B

f

B

E

G#m

E

VERSE 1

B/D# **p**

E2

B/D#

E2

B/D#

1. When dark - ness deep - ens, the path un - sure, the sun is hid - den by the

F#sus

E2

G#m7

F#(add4)

I look to heav - en and cry to Thee: O

E2

F#(add4)

B

God, be here with me.

B **mp**

E2

B

When dark - ness deep - ens, the path un - sure,

20 E2 G#m7 F#sus B/D#

the sun is hid - den by the storms, I look to heav - en

23 E2 G#m7 F#(add4) E2 F#(add4) B

and cry to Thee: O God, be here with me. In

CHORUS

26 *mf* E F# B

ev - 'ry breath, ev - 'ry joy and tear, pass - ing hour, let me

29 F# B E F# B B/D# E

know You're near. I am, in death, for e - ter - ni - ty, O

32 *f* F# B

God be here with me.

VERSE 2

35 E2 B E2 G#m7

2. When faith is shak - en, when fear sur-round, my feet will stand on sol - id

38 F#sus B/D# E2 G#m7 F#(add4)

ground. In ev - 'ry sea - son, my song will be: O

CHORUS

41 E2 F#(add4) B *f* E

God, be here with me. In ev - 'ry breath, ev - 'ry

44 F# B E F# B

joy and tear, ev - 'ry pass - ing hour, let me know You're near. — In

47 E F# B B/D# E

life, in death, for e - ter - ni - ty, O God where with

50 B

me. — Oh —

VERSE 3

54 B *p* E E B

3. And in that mo - ment face to face, I will not need these eyes of

57 F# B E G#m7 F#(add4)

faith. For - ev - er af - ter, God, I will see that

60 E F#(add4) B E2 F#(add4)

You've al - ways been with me. Oh, — You've al - ways been with

CHORUS

63 B *ff* E

me! — Oh! — In ev - 'ry breath, ev - 'ry

66 F# B E F# B

joy and tear, ev - 'ry pass - ing hour, let me know You're near. — In

69 E F# B B/D# E F#

life, in death, for e - ter - ni - ty, O God You are here with

Detailed description: This block contains the first line of music, measures 69 to 71. The key signature has three sharps (F#, C#, G#). The melody starts on a half rest, then moves to G#4, A4, B4, A4, G#4, F#4, E4, D4, C#4, B3, A3, G#3, F#3, E3. Chords are E, F#, B, B/D#, E, F#.

72 1 G#m7 B/D# 2 G#m7 B/D# E F#

me. In me. Oh God, You - are here with me!

Detailed description: This block contains the second line of music, measures 72 to 74. Measure 72 has a first ending (1) with chords G#m7 and B/D# leading to a repeat sign. Measure 73 has a second ending (2) with chords G#m7 and B/D# leading to a repeat sign. Measure 74 has chords E and F#. The melody continues with notes G#4, A4, B4, A4, G#4, F#4, E4, D4, C#4, B3, A3, G#3, F#3, E3.

75 B

Whoa _____

Detailed description: This block contains measure 75. The chord is B. The melody consists of a long note on B4, followed by a series of eighth notes: A4, G#4, F#4, E4, D4, C#4, B3, A3, G#3, F#3, E3.

78 E B E

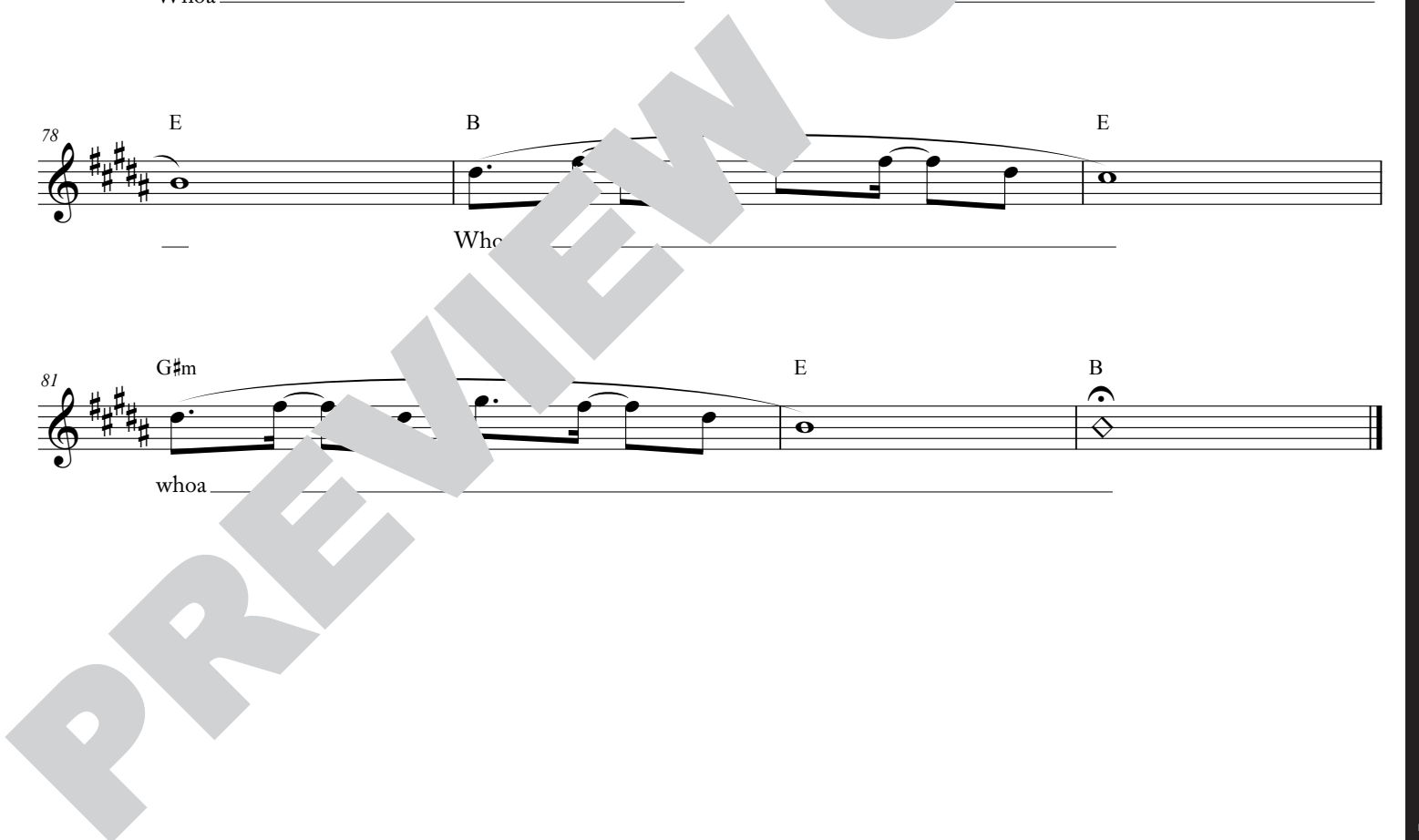
Whoa _____

Detailed description: This block contains measure 78. The chord is E. The melody consists of a long note on E4, followed by a series of eighth notes: D4, C#4, B3, A3, G#3, F#3, E3.

81 G#m E B

whoa _____

Detailed description: This block contains measure 81. The chord is G#m. The melody consists of a long note on G#4, followed by a series of eighth notes: F#4, E4, D4, C#4, B3, A3, G#3, F#3, E3. The measure ends with a diamond symbol.

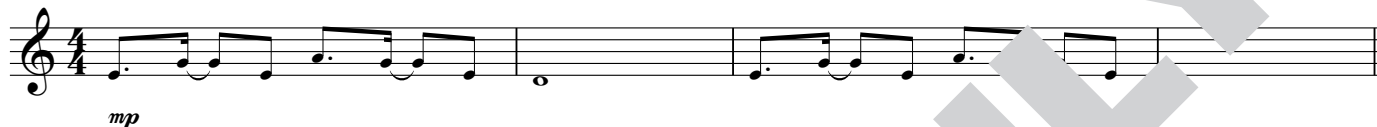


Here With Me

Words and Music by
TIM HUGHES, NICK HERBERT,
and PHIL WICKHAM

♩ = 70

C



f

C

F

Am

F



VERSE 1

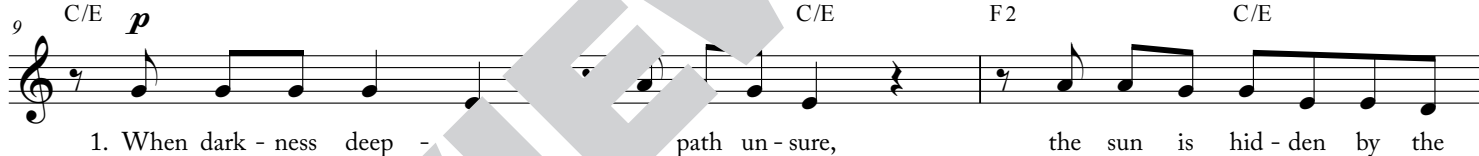
C/E

p

C/E

F2

C/E



1. When dark - ness deep - path un - sure, the sun is hid - den by the

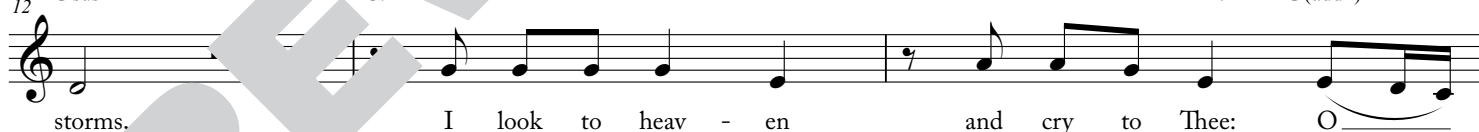
G sus

C/E

F2

Am7

G(add4)



storms. I look to heav - en and cry to Thee: O

G(add4)

C



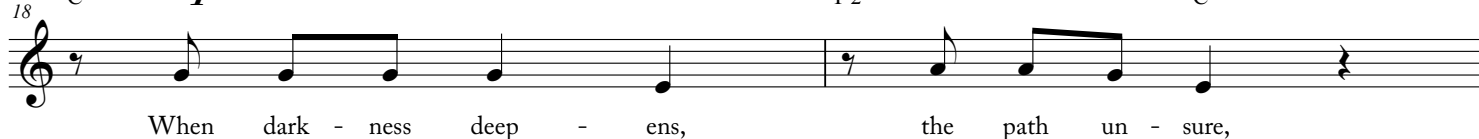
God, be here with me.

C

mp

F2

C



When dark - ness deep - ens, the path un - sure,

20 F2 Am7 Gsus C/E

the sun is hid - den by the storms, I look to heav - en

23 F2 Am7 G(add4) F2 G(add4) C

and cry to Thee: O God, be here with me In

CHORUS

26 mf F G C

ev - 'ry breath, ev - 'ry joy and tear, ev - 'ry miss - ing hour, let me

29 G C F G C C/E F

know You're near. In life in death, for e - ter - ni - ty, O

32 G C

God be here with me.

VERSE 2

35 C F2 C F2 Am7

When earth is shak - en, when fear sur-round, my feet will stand on sol - id

38 Gsus C/E F2 Am7 G(add4)

ground. In ev - 'ry sea - son, my song will be: O

CHORUS

41 F2 G(add4) C f F

God, be here with me. In ev - 'ry breath, ev - 'ry

44 G C F G C

joy and tear, ev - 'ry pass - ing hour, let me know You're near. — In

47 F G C C/E F

life, in death, for e - ter - ni - ty, O God be with

50 C

me. — Oh. —

VERSE 3

54 C *p* F F C

3. And in that mo - ment I will not need these eyes of

57 G F Am7 G(add4)

faith. — or - ev - er af - ter, God, I will see that

60 F (add4) C F2 G(add4)

Ye al - ways been with me. Oh, — You've al - ways been with

CHORUS

ff
F

63 C

me! — Oh! — In ev - 'ry breath, ev - 'ry

66 G C F G C

joy and tear, ev - 'ry pass - ing hour, let me know You're near. — In

69 F G C C/E F G

life, in death, for e - ter - ni - ty, O God You are here with

Detailed description: This block contains the first line of music, measures 69 to 71. The melody is written on a treble clef staff. Chords F, G, C, C/E, F, and G are indicated above the staff. The lyrics are: "life, in death, for e - ter - ni - ty, O God You are here with".

72 1 2 Am7 C/E Am7 C/E F G

me. In me. Oh God, You - are here with me!

Detailed description: This block contains the second line of music, measures 72 to 74. It features a first ending bracket over measures 72 and 73, and a second ending bracket over measures 73 and 74. Chords Am7, C/E, Am7, C/E, F, and G are indicated. The lyrics are: "me. In me. Oh God, You - are here with me!".

75 C

Whoa _____

Detailed description: This block contains measure 75. The melody is written on a treble clef staff with a C chord above it. The lyrics "Whoa" are followed by a blank line for a vocal flourish.

78 F C F

Whoa _____

Detailed description: This block contains measure 78. The melody is written on a treble clef staff with chords F, C, and F above it. The lyrics "Whoa" are followed by a blank line for a vocal flourish.

81 Am F C

whoa _____

Detailed description: This block contains measure 81. The melody is written on a treble clef staff with chords Am, F, and C above it. The lyrics "whoa" are followed by a blank line for a vocal flourish.

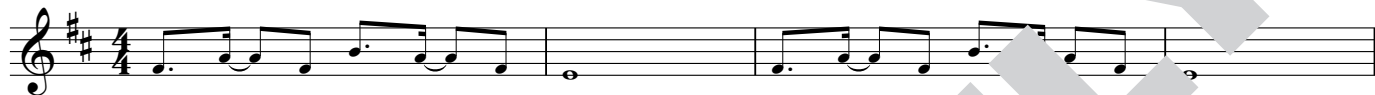
PREVIEW ONLY

Here With Me

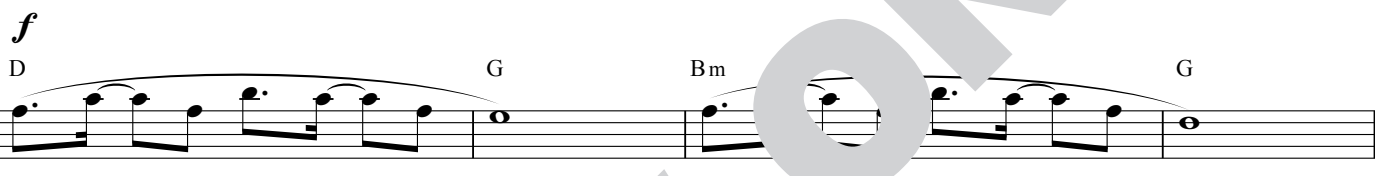
Words and Music by
TIM HUGHES, NICK HERBERT,
and PHIL WICKHAM

♩ = 70

D



mp



Whoa _____ whoa _____

VERSE 1

D/F#

p



1. When dark - ness deep _____ the path un - sure, the sun is hid - den by the

A sus

D

G2

Bm7

A(add4)



stor _____ I look to heav - en and cry to Thee: O _____

G2

A(add4)

D



God, be here with me.

D

mp

G2

D



When dark - ness deep - ens, the path un - sure,

20 G2 Bm7 A sus D/F#

the sun is hid - den by the storms, I look to heav - en

23 G2 Bm7 A(add4) G2 A(add4) D

and cry to Thee: O God, be here with me. In

CHORUS

26 mf G A D

ev - 'ry breath, ev - 'ry joy and tear, in every pass - ing hour, let me

29 A D G A D D/F# G

know You're near. in death, for e - ter - ni - ty, O

32 f D

God be here with me.

VERSE 2

35 m G2 D G2 Bm7

2. When faith is shak - en, when fear sur-round, my feet will stand on sol - id

38 A sus D/F# G2 Bm7 A(add4)

ground. In ev - 'ry sea - son, my song will be: O

CHORUS

41 G2 A(add4) D f G

God, be here with me. In ev - 'ry breath, ev - 'ry

44 A D G A D

joy and tear, ev - 'ry pass - ing hour, let me know You're near. — In

47 G A D D/F# G

life, in death, for e - ter - ni - ty, O God, be - fore with

50 D

me. — Oh —

VERSE 3

54 D *p* G G D

3. And in that mo - ment we face to face, I will not need these eyes of

57 A G Bm7 A(add4)

faith. For - ev - er af - ter, God, I will see that

60 A(add4) D G2 A(add4)

you've al - ways been with me. Oh, — You've al - ways been with

CHORUS

63 D *ff* G

me! — Oh! — In ev - 'ry breath, ev - 'ry

66 A D G A D

joy and tear, ev - 'ry pass - ing hour, let me know You're near. — In

69 G A D D/F# G A

life, in death, for e - ter - ni - ty, O God You are here with

Detailed description: This block contains the first line of music, measures 69 to 71. It is written in treble clef with a key signature of one sharp (F#). The notes are: G4 (quarter), A4 (quarter), B4 (quarter), C5 (quarter), B4-A4 (beamed eighth notes), G4 (quarter), F#4 (quarter), E4 (quarter), D4 (quarter), C4 (quarter), B3 (quarter), A3 (quarter), G3 (quarter). Chords G, A, D, D/F#, G, and A are indicated above the staff.

72

| | | | | | | | |
|---|-----|------|---|-----|------|---|---|
| 1 | Bm7 | D/F# | 2 | Bm7 | D/F# | G | A |
|---|-----|------|---|-----|------|---|---|

me. In me. Oh God, You - with me!

Detailed description: This block contains the second line of music, measures 72 to 74. It is written in treble clef with a key signature of one sharp. The notes are: B3 (half), A3 (half), G3 (half), F#3 (half), E3 (half), D3 (half), C3 (half), B2 (half), A2 (half), G2 (half), F#2 (half), E2 (half), D2 (half), C2 (half), B1 (half), A1 (half), G1 (half). Chords Bm7, D/F#, Bm7, D/F#, G, and A are indicated above the staff.

75 D

Whoa

Detailed description: This block contains measure 75. It is written in treble clef with a key signature of one sharp. The notes are: D4 (quarter), E4 (quarter), F#4 (quarter), G4 (quarter), A4 (quarter), B4 (quarter), C5 (quarter), B4-A4 (beamed eighth notes), G4 (quarter), F#4 (quarter), E4 (quarter), D4 (quarter). A long slur covers the entire measure. The chord D is indicated above the staff.

78 G D G

Whoa

Detailed description: This block contains measure 78. It is written in treble clef with a key signature of one sharp. The notes are: G4 (quarter), A4 (quarter), B4 (quarter), C5 (quarter), B4-A4 (beamed eighth notes), G4 (quarter), F#4 (quarter), E4 (quarter), D4 (quarter). A long slur covers the entire measure. Chords G, D, and G are indicated above the staff.

81 Bm G D

whoa

Detailed description: This block contains measure 81. It is written in treble clef with a key signature of one sharp. The notes are: B3 (quarter), A3 (quarter), G3 (quarter), F#3 (quarter), E3 (quarter), D3 (quarter), C3 (quarter), B2 (quarter), A2 (quarter), G2 (quarter), F#2 (quarter), E2 (quarter), D2 (quarter), C2 (quarter), B1 (quarter), A1 (quarter), G1 (quarter). A long slur covers the entire measure. Chords Bm, G, and D are indicated above the staff.