

# Children of Light

Words and Music by KRISTIAN STANFILL,  
JESSE REEVES, JASON INGRAM  
and PAT BARNETT

Energetic ♩ = 124



*mf*

INTRO



Whoa



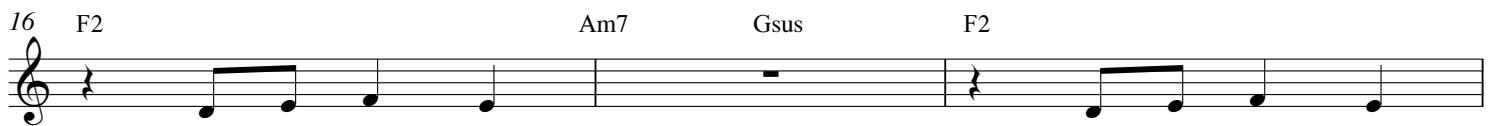
whoa



VERSE



1. It's a new day,  
2. There is free - dom



ev - 'ry - thing changed  
in Your king - dom.

when Your love came  
For You, Je - sus,

19 C Gsus Am7

in - to the dark - ness. You sent the light of the  
we will be dan - cing. For - ev - er Your joy is our

21 F2 C Gsus Am7

Son, song, For - ev - er Your joy is our

23 F2 C Gsus

Son. song. Wake up,

26

o - pen your eyes, ng - er dead, we are a - live.

29

Rise up chil - dren of light, o - pen the doors,

32 F2

o let it shine. Whoa

35 C F2

whoa

38 C 1.

1.

BRIDGE

41 *mp* Gsus F2  
 2. Song for the broken, let it shine

44 Gsus F2 Gsus  
 In - to the shadows, let it shine! Hope for the whole world,

47 F2 C 1.  
 let it shine, let it shine!

CHORUS

50 2. C *mf*  
 o - pen your eyes,

53  
 no longer dead, we are alive.

55  
 Rise up children of light, o - pen the doors,

58  
 go let it shine. Wake up, o - pen your eyes,

61  
 no longer dead, we are alive. Rise up

64 *ff*  
chil - dren - of light, o - pen - the doors, go let - it shine. Whoa -

67 F2 C

70 F2  
whoa -

73 C F2/A  
whoa -

76  
whoa -

79 F2 C

VERSE 1

82 Am7 Gsus F2 *f*  
1. It's a new day!

85 Am7 Gsus F2 Am7 Gsus  
Ev - 'ry - thing changed

88 F2 C

when Your love came in - to the dark - ness.

Detailed description: This is the first musical staff, starting at measure 88. It features a treble clef and a key signature of one flat (F major). The melody consists of quarter notes: G4 (when), A4 (Your), B4 (love), C5 (came), B4-A4 (in - to), G4 (the), F4 (dark), and E4 (ness). Chords are indicated as F2 and C.

90 Gsus Am7 F2

You sent the light of the Son,

Detailed description: This is the second musical staff, starting at measure 90. The melody continues with quarter notes: D4 (You), E4 (sent), F4 (the), G4 (light), A4-G4 (of the), and F4 (Son). Chords are indicated as Gsus, Am7, and F2.

92 Gsus C

You sent the light of the Son.

Detailed description: This is the third musical staff, starting at measure 92. The melody continues with quarter notes: D4 (You), E4 (sent), F4 (the), G4 (light), A4-G4 (of the), and F4 (Son). Chords are indicated as Gsus and C.

PREVIEW ONLY

# Children of Light

Words and Music by KRISTIAN STANFILL,  
JESSE REEVES, JASON INGRAM  
and PAT BARNETT

Energetic ♩ = 124



*mf*

INTRO



Whoa



whoa



VER

C#m7

Bsus

A2

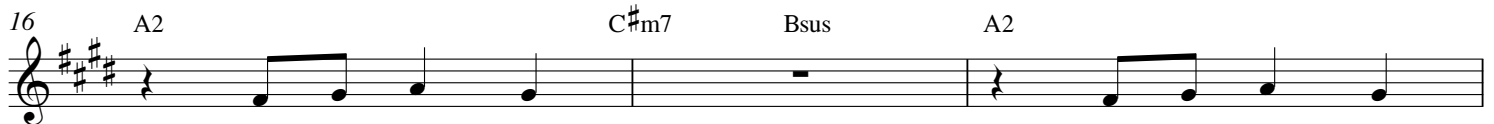
*mp*

C#m7

Bsus



1. It's a new day,
2. There is free - dom



ev - 'ry - thing changed  
in Your king - dom.

when Your love came  
For You, Je - sus,

19 E Bsus C#m7

in - to the dark - ness. You sent the light of the  
we will be dan - cing. For - ev - er Your joy is our

21 A2 E Bsus C#m7

Son, song, For - ev - er You sent the light of the  
our

23 A2 E Bsus E *f*

Son. Wake up,  
song.

26

o - pen your eyes, long - er dead, we are a - live.

29

chil - dren of light, o - pen the doors,

32 A2

go let it shine. Whoa

35 E A2

whoa

38 E 1.

whoa

BRIDGE

41 *mp*  
Bsus A2  
Song for the broken, let it shine

44 Bsus A2 Bsus  
In to the shadows, let it shine! Hope for the whole world,

47 A2 E  
let it shine, let it shine!

CHORUS

50 E *m*  
no longer dead, o - pen your eyes,

53  
no longer dead, we are a - live.

55  
Rise up children of light, o - pen the doors,

58  
go let it shine. Wake up, o - pen your eyes,

61  
no longer dead, we are a - live. Rise up



64 *ff*  
 chil - dren \_ of light, o - pen \_ the doors, go let \_ it shine. Whoa \_

67 A2 E

70 A2  
 \_ \_ \_ \_ \_ whoa \_ \_ \_ \_

73 E A2/C#  
 \_ \_ \_ \_ \_ whoa \_ \_ \_ \_

76 E  
 \_ \_ \_ \_ \_ whoa \_ \_ \_ \_

79 E

VERSE 1

82 C#m7 Bsus A2 *f*  
 1. It's a new day!

85 C#m7 Bsus A2 C#m7 Bsus  
 Ev - 'ry - thing changed

88 A2 E

when Your love came in - to the dark - ness.

Detailed description: This block shows the first musical staff, starting at measure 88. The key signature has three sharps (F#, C#, G#). The staff contains a treble clef, a key signature signature, and a 7-measure rest. The melody consists of quarter notes: G4, A4, B4, C5, B4, A4, G4. The lyrics are "when Your love came in - to the dark - ness." with a 7-measure rest at the end.

90 Bsus C#m7 A2

You sent the light of the Son,

Detailed description: This block shows the second musical staff, starting at measure 90. The key signature has three sharps. The staff contains a treble clef, a key signature signature, and a 7-measure rest. The melody consists of quarter notes: G4, A4, B4, C5, B4, A4, G4. The lyrics are "You sent the light of the Son," with a 7-measure rest at the end.

92 Bsus E

You sent the light of the Son.

Detailed description: This block shows the third musical staff, starting at measure 92. The key signature has three sharps. The staff contains a treble clef, a key signature signature, and a 7-measure rest. The melody consists of quarter notes: G4, A4, B4, C5, B4, A4, G4. The lyrics are "You sent the light of the Son." with a 7-measure rest at the end.

# Children of Light

Words and Music by KRISTIAN STANFILL,  
JESSE REEVES, JASON INGRAM  
and PAT BARNETT

Energetic ♩ = 124

G

*mf*

INTRO

4

*f*

Whoa

7

whoa

10

VERSE

*mp*

1. It's a new day,  
2. There is free - dom

16

ev - 'ry - thing changed when Your love came  
in Your king - dom. For You, Je - sus,

19

in - to the dark - ness. You sent the light of the  
we will be dan - cing. For - ev - er Your joy is our

21

Son, song, For - ev - er You sent the light of the our

23

Son. song. Wake up,

26

o - pen your eyes, o - pen your eyes, we are a - live.

29

Rise up chil - dren of light, o - pen the doors,

32

go let it shine. Whoa

35

whoa

38

1.

BRIDGE

41 *mp* Dsus C2  
 2. Song for the broken, let it shine

44 Dsus C2 Dsus  
 In - to the shadows, let it shine! Hope for the whole world,

47 C2 G 1.  
 let it shine, let it shine!

CHORUS

50 2. G *mf*  
 o - pen your eyes,

53  
 no longer dead, we are alive.

55  
 Rise up children of light, o - pen the doors,

58  
 go let it shine. Wake up, o - pen your eyes,

61  
 no longer dead, we are alive. Rise up

64 *ff*

chil - dren - of light, o - pen - the doors, go let - it shine. Whoa

67 C2 G

70 C2

whoa

73 G C2/E

whoa

76

whoa

79 C2 G

VERSE 1

82 Em7 Dsus C2 *f*

1. It's a new day!

85 Em7 Dsus C2 Em7 Dsus

Ev - 'ry - thing changed

88 C2 G

when Your love came in - to the dark - ness.

Detailed description: This is the first musical staff, starting at measure 88. It is in the key of D major (one sharp) and 4/4 time. The melody begins with a quarter rest, followed by quarter notes G4, A4, B4, and C5. The second measure contains quarter notes D5, C5, B4, and A4. The third measure contains quarter notes G4, F4, E4, and D4. The staff ends with a quarter rest. Chord symbols C2 and G are placed above the first and third measures respectively.

90 Dsus Em7 C2

You sent the light of the Son,

Detailed description: This is the second musical staff, starting at measure 90. The melody consists of quarter notes G4, A4, B4, and C5 in the first measure, followed by quarter notes D5, C5, B4, and A4 in the second measure, and a quarter rest in the third measure. Chord symbols Dsus, Em7, and C2 are placed above the first, second, and third measures respectively.

92 Dsus G

You sent the light of the Son.

Detailed description: This is the third musical staff, starting at measure 92. The melody consists of quarter notes G4, A4, B4, and C5 in the first measure, followed by quarter notes D5, C5, B4, and A4 in the second measure, and a quarter rest in the third measure. Chord symbols Dsus and G are placed above the first and second measures respectively.

PREVIEW ONLY