

# A King Like This

Words and Music by  
CHRIS TOMLIN,  
MATT REDMAN, and JONAS MYRIN

♩ = 72

A2

*p*

VERSE 1

5 A2 *p*

1. A King like this, maj - es - ty lay - ing in man - A King like this;

8

un - to us is born a Sav ... The Light, the Light has come.

11 A2 *mp* F#m7

A King like this, high - est name and the song of heav - en. A King like this

14 D2 *mf*

born of flesh in - to our suf - fer - ing. The Light, the Light has come. He is

CHORUS

17 A/C# D2 E A/C# D2 E

Christ, the Lord. He is Christ, our Sav - ior. I bow my heart be - fore

21 D2 F#m7 E D2 F#m7

no oth - er name. I bow my heart be - fore no oth - er King.

VERSE 2

24 E A2  
 — 2. A King like this, a sav - ing love that would not f - sake us;

27 F#m7  
 be-trayed by a kiss and led to the cross for our for - give - ness.

29 D2 E  
 The Light, the Light has come. He is the Lord. — He is

33 A/C# D2 E D2 F#m7  
 Christ, our Sav - ior. I bow my heart be-fore — no oth - er name. —

36 E D2 F#m7 E  
 — bow my heart be-fore — no oth - er King. — We

BRIDGE

39 *ff* E D2  
 lift — our eyes, the Light has come! We lift up — our eyes, the

42 E D2 E  
 Light has come! We lift up — our eyes, the Light has come! We

45 D2/F# E/G#  
 lift up — our eyes, lift up — our eyes, lift up — Your eyes! He is

CHORUS

48 *f* A/C# D2 E A/C# D2 E  
 Christ, the Lord. — He is Christ, our Sav - ior. He is

52 A/C# D2 E A/C# D2 E  
 Christ, the Lord. — He is Christ, our Sav - ior. I my heart be-fore

56 *ff* D2 F#m7 E D2 F#m7  
 — no oth - er name. — I bow my heart be-fore — no oth - er King.

59 E E E  
 — I bow my heart no oth - er name. — I bow my heart be-fore

62 D2 E  
 — no oth - er King. —

VERSE 3

65 *p*  
 A King like this, a throne of grace that will stand for - ev - er.

67 F#m7 D2  
 The an - gels sing glo - ry, glo - ry, hal - le - lu - jah! The Light, the

70  
 Light has come. The Light, the Light has come.

# A King Like This

Words and Music by  
CHRIS TOMLIN,  
MATT REDMAN, and JONAS MYRIN

♩ = 72

Ab2

*p*

VERSE 1

5 Ab2 *p*

8

11 Ab2 *mp* Fm7

14 Db2 *mf*

CHORUS

17 Ab/C Db2 Eb Ab/C Db2 Eb

21 Db2 Fm7 Eb Db2 Fm7

worshipcharts.com

Copying of this preview prohibited.

worshipcharts.com

VERSE 2

24 Eb Ab2  
 — 2. A King like this, a sav - ing love that would not f - sake us;

27 Fm7  
 be-trayed by a kiss and led to the cross for our for - give - ness.

29 Db2 Eb  
 The Light, the Light has come. He is the Lord. He is

33 Ab/C Db2 Eb Db2 Fm7  
 Christ, our Sav - io. I bow my heart be-fore no oth - er name.

36 Eb Db2 Fm7 Eb  
 I bow my heart be-fore no oth - er King. We

BRIDGE

39 ff Eb Db2  
 lift up our eyes, the Light has come! We lift up our eyes, the

42 Eb Db2 Eb  
 Light has come! We lift up our eyes, the Light has come! We

45 Db2/F Eb/G  
 lift up our eyes, lift up our eyes, lift up Your eyes! He is

CHORUS

48 *f* A♭/C D♭2 E♭ A♭/C D♭2 E♭

Christ, the Lord. He is Christ, our Sav - ior. He is

52 A♭/C D♭2 E♭ A♭/C D♭2 E♭

Christ, the Lord. He is Christ, our Sav - ior. my heart be-fore

56 *ff* D♭2 Fm7 E♭ D♭2 Fm7

no oth - er name. I bow my be-fore no oth - er King.

59 E♭ E♭

I bow my heart no oth - er name. I bow my heart be-fore

62 D♭2 E♭

no oth - er King.

VERSE 3

65 *p*

A King like this, a throne of grace that will stand for - ev - er.

67 Fm7 D♭2

Thean - gels sing glo - ry, glo - ry, hal - le - lu - jah! The Light, the

70

Light has come. The Light, the Light has come.

# A King Like This

Words and Music by  
CHRIS TOMLIN,  
MATT REDMAN, and JONAS MYRIN

♩ = 72

G2



*p*

VERSE 1

G2 *p*



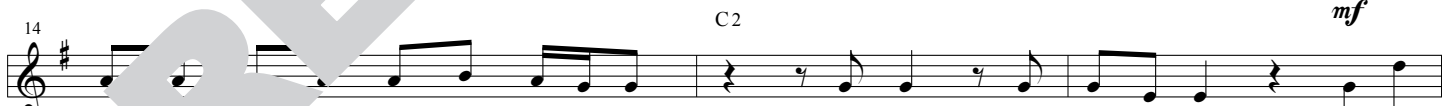
1. A King like this, maj - es - ty lay - ing in man - A King like this;



un - to us is born a Sav - The Light, the Light has come.



A King like this, high - est name and the song of heav - en. A King like this



flesh in - to our suf - fer - ing. The Light, the Light has come. He is

CHORUS



Christ, the Lord. — He is Christ, our Sav - ior. I bow my heart be - fore



— no oth - er name. — I bow my heart be - fore — no oth - er King.

VERSE 2

24 D G2  
 — 2. A King like this, a sav - ing love that would not fo - sake us;

27 Em7  
 be-trayed by a kiss and led to the cross for our - give - ness.

CHORUS

29 C2 C2 D  
 The Light, the Light has come. He is Christ the Lord. — He is

33 G/B C2 D C2 Em7  
 Christ, our Sav - ior. I bow my heart be-fore — no oth - er name. —

36 D C2 Em7 D  
 — I bow my heart be-fore — no oth - er King. — We

BRIDGE

39 ff C2 D C2  
 up — our eyes, the Light has come! We lift up — our eyes, the

42 D C2 D  
 Light has come! We lift up — our eyes, the Light has come! We

45 C2/E D/F#  
 lift up — our eyes, lift up — our eyes, lift up — Your eyes! He is



CHORUS

48 *f* G/B C2 D G/B C2 D  
 Christ, the Lord. — He is Christ, our Sav - ior. He is

52 G/B C2 D G/B C2 D  
 Christ, the Lord. — He is Christ, our Sav - ior. I my heart be-fore

56 *ff* C2 Em7 D C2 Em7  
 — no oth - er name. — I bow my heart be-fore — no oth - er King.

59 D C2 D  
 — I bow my heart be no oth - er name. — I bow my heart be-fore

62 C2 Em7 D  
 — no oth - er King. —

VERSE 3

65 *p* G2  
 3. King like this, a throne of grace that will stand for - ev - er.

67 Em7 C2  
 The an - gels sing glo - ry, glo - ry, hal - le - lu - jah! The Light, the

70  
 Light has come. The Light, the Light has come.